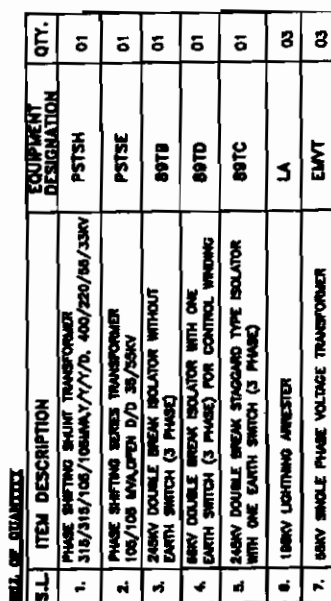


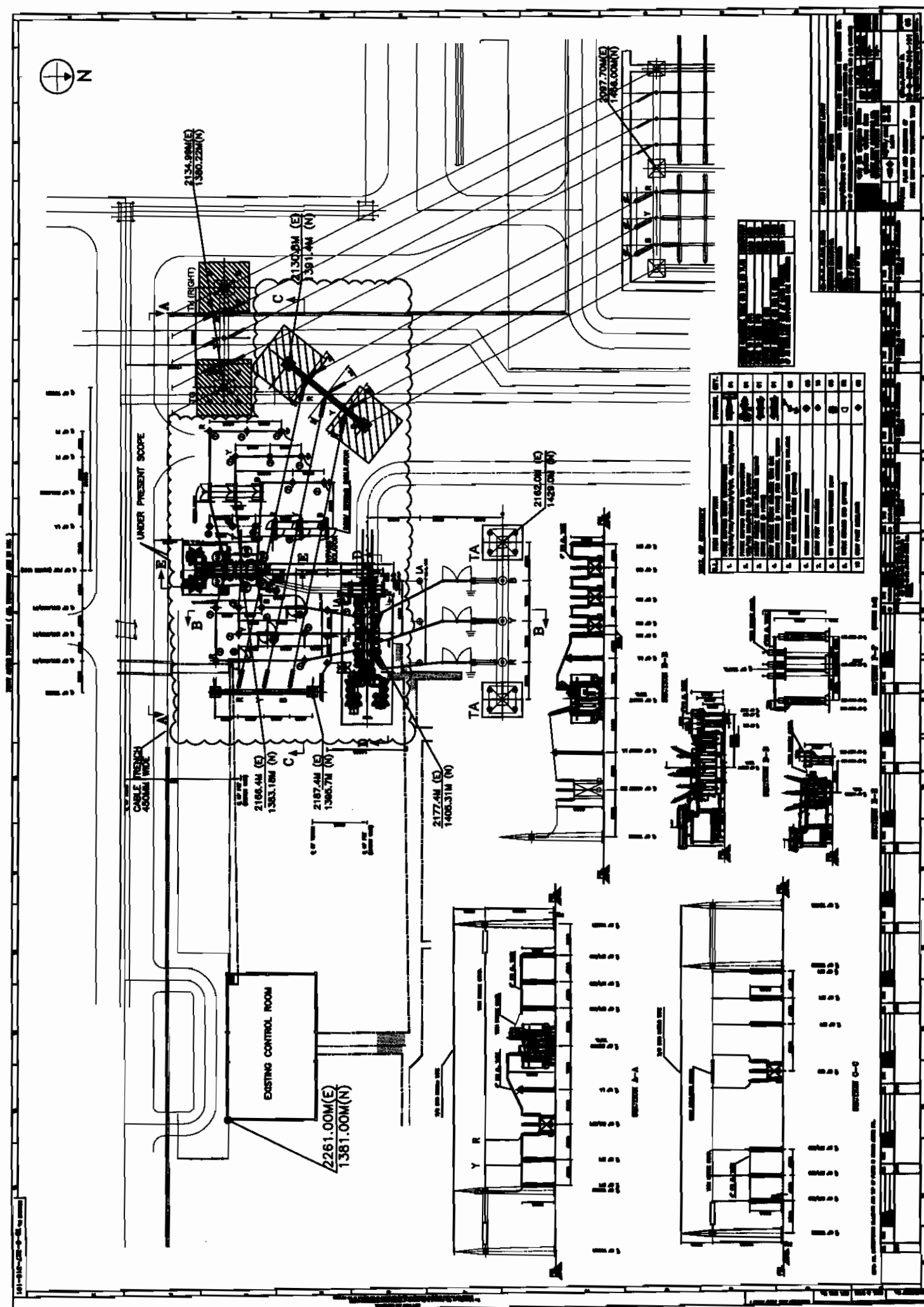
**BAY-18
NEW EXTENSION BAY**

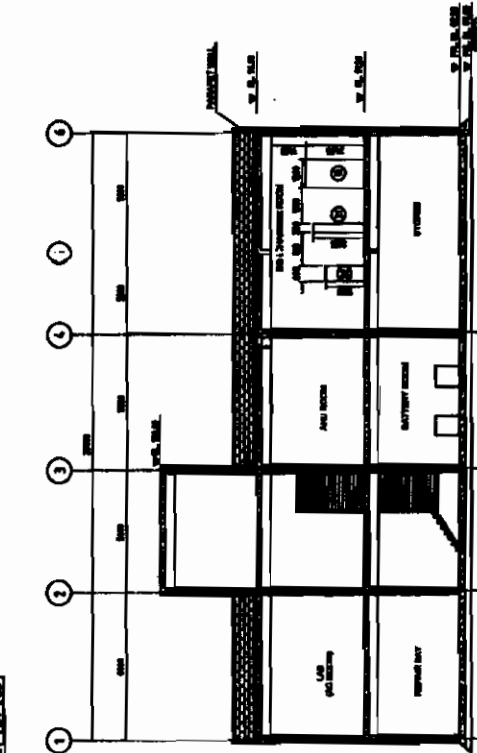


S.N.	ITEM DESCRIPTION	400KV	220KV
1.	LIGHTNING IMPULSE WITHSTAND VOLTAGE	1425KV	1000KV
2.	POWER FREQUENCY WITHSTAND VOLTAGE	630KV	400KV
3.	SWITCHING IMPULSE WITHSTAND VOLTAGE	1050KV	-

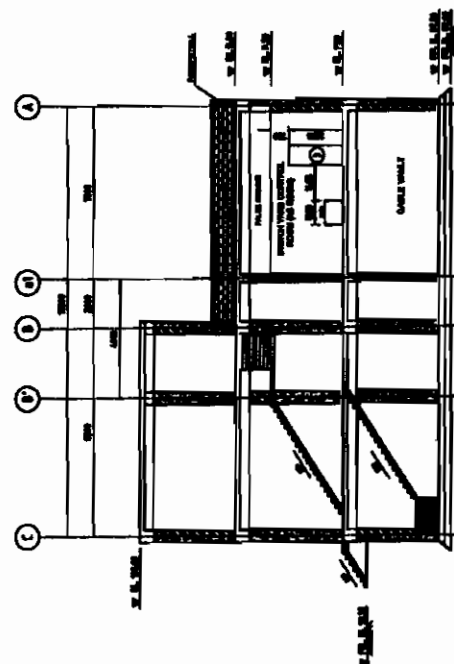
[illegible]

DATE	DESCRIPTION	AMOUNT	BALANCE
1900			
1901			
1902			
1903			
1904			
1905			
1906			
1907			
1908			
1909			
1910			
1911			
1912			
1913			
1914			
1915			
1916			
1917			
1918			
1919			
1920			
1921			
1922			
1923			
1924			
1925			
1926			
1927			
1928			
1929			
1930			
1931			
1932			
1933			
1934			
1935			
1936			
1937			
1938			
1939			
1940			
1941			
1942			
1943			
1944			
1945			
1946			
1947			
1948			
1949			
1950			
1951			
1952			
1953			
1954			
1955			
1956			
1957			
1958			
1959			
1960			
1961			
1962			
1963			
1964			
1965			
1966			
1967			
1968			
1969			
1970			
1971			
1972			
1973			
1974			
1975			
1976			
1977			
1978			
1979			
1980			
1981			
1982			
1983			
1984			
1985			
1986			
1987			
1988			
1989			
1990			
1991			
1992			
1993			
1994			
1995			
1996			
1997			
1998			
1999			
2000			
2001			
2002			
2003			
2004			
2005			
2006			
2007			
2008			
2009			
2010			
2011			
2012			
2013			
2014			
2015			
2016			
2017			
2018			
2019			
2020			
2021			
2022			
2023			
2024			
2025			
2026			





SECTION A-A



SECTION B-B

NOTES:
1. FOR NOTES SHEET 1 OF 2.

ANDHRA PRADESH POWER
GENERATION CORPORATION LTD.

KOTHAGUDEM THERMAL POWER STATION
STAGE-VI, UNIT # XI, (11600MW)



DSEIN
CONSULTING ENGINEERS
NEW DELHI - INDIA

BOC ENERGY SYSTEMS LTD
CHENNAI, INDIA

NO.	DATE	BY	CHKD.	REVISION
1	13-01-2013
2
3
4
5
6
7
8
9
10
11
12
13
14
15
16
17
18
19
20
21
22
23
24
25
26
27
28
29
30
31
32
33
34
35
36
37
38
39
40
41
42
43
44
45
46
47
48
49
50
51
52
53
54
55
56
57
58
59
60
61
62
63
64
65
66
67
68
69
70
71
72
73
74
75
76
77
78
79
80
81
82
83
84
85
86
87
88
89
90
91
92
93
94
95
96
97
98
99
100

REVISIONS

APPROVED

DATE

BY

CHKD.

REVISION

DATE

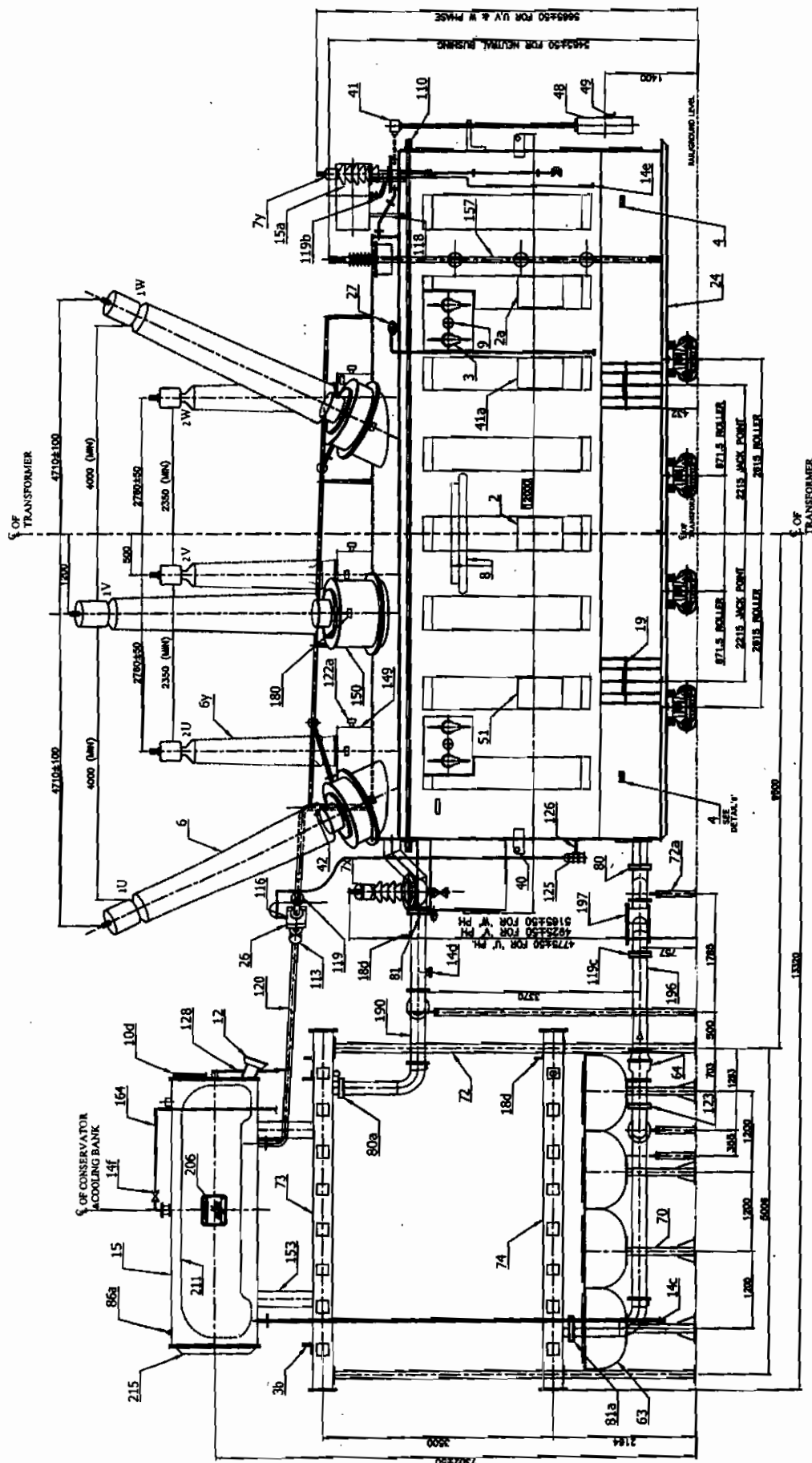
BY

CHKD.

INVENTORY NO.

DAY 2

INVENTORY NO.

[illegible]

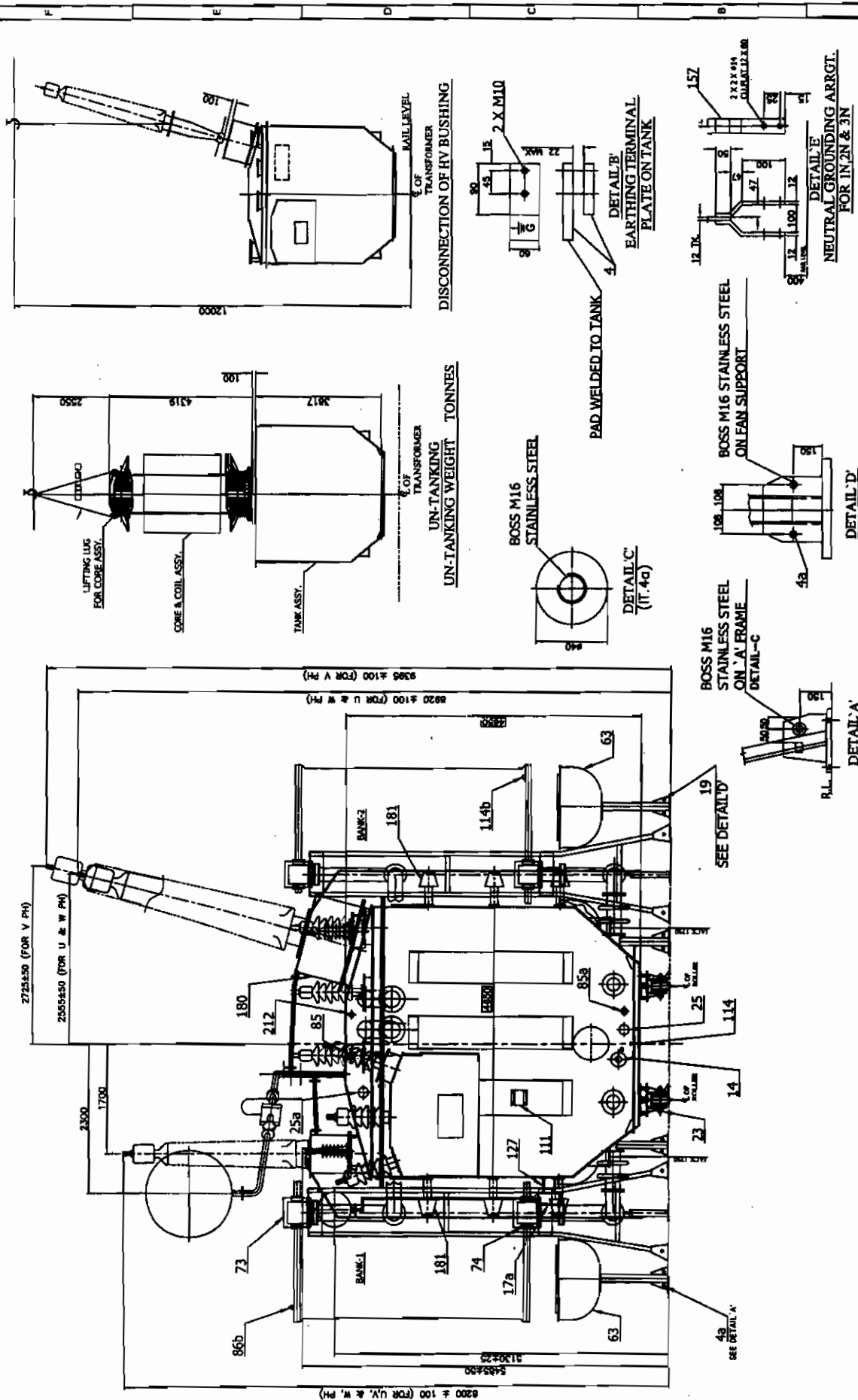
DIRECTION OF WITHDRAWAL

BY APPOINTMENT OF THE COURT.

DATE _____

INVENTORY NO.

REV	DATE	BY	DATE	REV	DATE	BY	DATE
02	01.07.10	SANTOSH LALIT	01.07.10	01	01.07.10	SANTOSH LALIT	01.07.10
ZONE (ENG. FULLY CHANGED.)				CABLE BOX DELAYED.			
NO. OF TRANSFORMERS				NO. OF TRANSFORMERS			
PROJECT				PROJECT			
LOA REF. NO.				LOA REF. NO.			
TYPE OF PRODUCT				TYPE OF PRODUCT			
NAME OF CUSTOMER				NAME OF CUSTOMER			
KOTHA GUDEM TFS STAGE-VI (1 X 500 MW)				KOTHA GUDEM TFS STAGE-VI (1 X 500 MW)			
Lr. No. CPPIA/14KTS-VUD. No:26/1999, DT. 11-11-2009				Lr. No. CPPIA/14KTS-VUD. No:26/1999, DT. 11-11-2009			
W.O. 49956-A-312-81				W.O. 49956-A-312-81			
STATUS OF DRAWING				STATUS OF DRAWING			
SHEET NO. 01 OF 01				SHEET NO. 01 OF 01			
DATE				DATE			
BY				BY			
SANTOSH LALIT				SANTOSH LALIT			
01.07.10				01.07.10			
02				02			
01.07.10				01.07.10			
SANTOSH LALIT				SANTOSH LALIT			
01.07.10				01.07.10			
02				02			
01.07.10				01.07.10			
SANTOSH LALIT				SANTOSH LALIT			
01.07.10				01.07.10			
02				02			
01.07.10				01.07.10			
SANTOSH LALIT				SANTOSH LALIT			
01.07.10				01.07.10			
02				02			
01.07.10				01.07.10			
SANTOSH LALIT				SANTOSH LALIT			
01.07.10				01.07.10			
02				02			
01.07.10				01.07.10			
SANTOSH LALIT				SANTOSH LALIT			
01.07.10				01.07.10			
02				02			
01.07.10				01.07.10			
SANTOSH LALIT				SANTOSH LALIT			
01.07.10				01.07.10			
02				02			
01.07.10				01.07.10			
SANTOSH LALIT				SANTOSH LALIT			
01.07.10				01.07.10			
02				02			
01.07.10				01.07.10			
SANTOSH LALIT				SANTOSH LALIT			
01.07.10				01.07.10			
02				02			
01.07.10				01.07.10			
SANTOSH LALIT				SANTOSH LALIT			
01.07.10				01.07.10			
02				02			
01.07.10				01.07.10			
SANTOSH LALIT				SANTOSH LALIT			
01.07.10				01.07.10			
02				02			
01.07.10				01.07.10			
SANTOSH LALIT				SANTOSH LALIT			
01.07.10				01.07.10			
02				02			
01.07.10				01.07.10			
SANTOSH LALIT				SANTOSH LALIT			
01.07.10				01.07.10			
02				02			
01.07.10				01.07.10			
SANTOSH LALIT				SANTOSH LALIT			
01.07.10				01.07.10			
02				02			
01.07.10				01.07.10			
SANTOSH LALIT				SANTOSH LALIT			
01.07.10				01.07.10			
02				02			
01.07.10				01.07.10			
SANTOSH LALIT				SANTOSH LALIT			
01.07.10				01.07.10			
02				02			
01.07.10				01.07.10			
SANTOSH LALIT				SANTOSH LALIT			
01.07.10				01.07.10			
02				02			
01.07.10				01.07.10			
SANTOSH LALIT				SANTOSH LALIT			
01.07.10				01.07.10			
02				02			
01.07.10				01.07.10			
SANTOSH LALIT				SANTOSH LALIT			
01.07.10				01.07.10			
02				02			
01.07.10				01.07.10			
SANTOSH LALIT				SANTOSH LALIT			
01.07.10				01.07.10			
02				02			
01.07.10				01.07.10			
SANTOSH LALIT				SANTOSH LALIT			
01.07.10				01.07.10			
02				02			
01.07.10				01.07.10			
SANTOSH LALIT				SANTOSH LALIT			
01.07.10				01.07.10			
02				02			
01.07.10				01.07.10			
SANTOSH LALIT				SANTOSH LALIT			
01.07.10				01.07.10			
02				0			

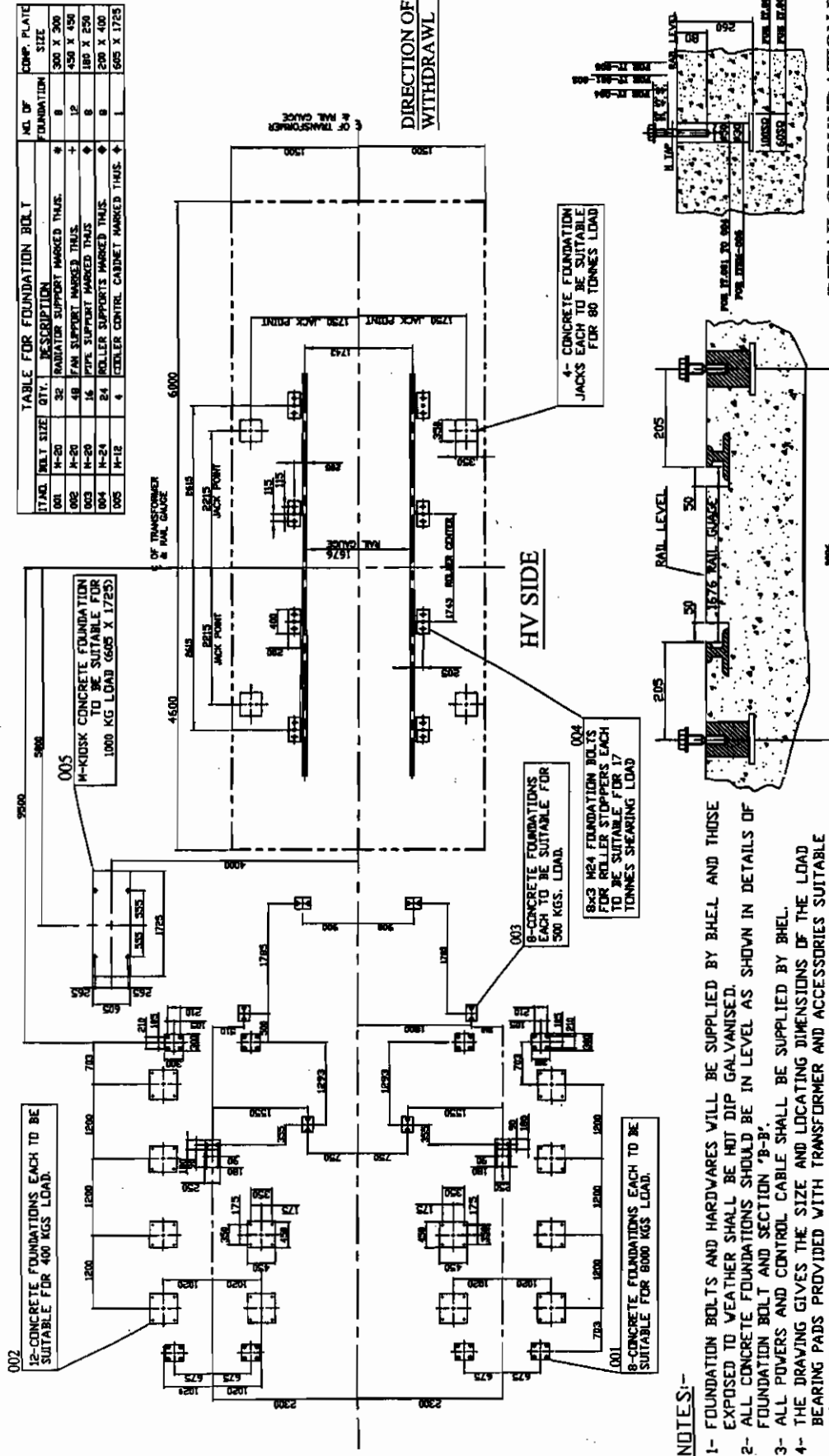
[illegible]

INVENTORY NO.

5000

0005

M-KIOSK CONCRETE FOUNDATION
TO BE SUITABLE FOR
1000 KG LOAD (605 X 1725)



SECTION B-B

REFER TABLE FOR BOLT SIZE

[illegible]

NOTES:-

- 1- FOUNDATION BOLTS AND HARDWARES WILL BE SUPPLIED BY BHEL AND THOSE EXPOSED TO WEATHER SHALL BE HOT DIP GALVANISED.
- 2- ALL CONCRETE FOUNDATIONS SHOULD BE IN LEVEL AS SHOWN IN DETAILS OF FOUNDATION BOLT AND SECTION 'B-B'.
- 3- ALL POWERS AND CONTROL CABLE SHALL BE SUPPLIED BY BHEL.
- 4- THE DRAWING GIVES THE SIZE AND LOCATING DIMENSIONS OF THE LOAD BEARING PADS PROVIDED WITH TRANSFORMER AND ACCESSORIES SUITABLE CONCRETE SLAB SIZE TO RECIEVE THESE PADS TO BE DECIDED BY CUSTOMER'S CIVIL ENGINEER.
- 5- POCKETS OF SUITABLE SIZE MAY BE LEFT WHILE CASTING FOUNDATION FOR EMBEDDING FEMALE PART OF FOUNDATION BOLT (TO BE SUPPLIED BY BHEL) AT THE TIME OF FINAL ERECTION.

6 -HOLES DIA 7 #12



भारत हेवी इलेक्ट्रिकल्स लिमिटेड
BHARAT HEAVY ELECTRICALS LIMITED

परिणामिश्र TRANSFORMER

भारतीय मानक IS: 226-1977 के अनुरूप
TO INDIAN STANDARD : 226-1977

[illegible][illegible]

1. उपर दी जाच के कुछ इन सेक्टर निम्नलिखित हैं।
2. कृषि क्षेत्र के अतिरिक्त इतना कम मात्रा वाले निम्न क्षेत्र हैं।
3. इस क्षेत्र में इतना कम मात्रा वाले निम्न क्षेत्र हैं।
4. निम्नलिखित क्षेत्र में निम्न मात्रा वाले निम्न क्षेत्र हैं।

NOTES-

1. THE ABOVE TABLE GIVES VOLTAGE AT NO LOAD
2. AND THE RELATIVE TERMINAL POSITIONS ON TRANSF.
3. ARE APPROXAS SHOWN
4. THE TANK IS SUITABLE FOR FULL VACUUM
5. WITH COKE AND VARIOUS OILS.
6. TAKE OIL SAMPLES EVERY SIX MONTHS FOR
7. INSPECTION AND DELIVERY TEST.

भारत मे निर्मित

MADE IN INDIA

NOTES:-

1. CUSTOMER IS REQUESTED TO QUOTE MAKER'S SL. NO., ELEC. - SPEC. NO., RATING & DIAGRAM PLATE DRG. NO., WHILE REFERRING ANY PROBLEM TO BHEL FOR EASY IDENTIFICATION.
2. INSTRUCTION FOR R & D PLATE REFER DRG. 3 499 00 00062.

REG. NO. 3 464 00 01023

10

ALL DIMENSIONS ARE IN MM)

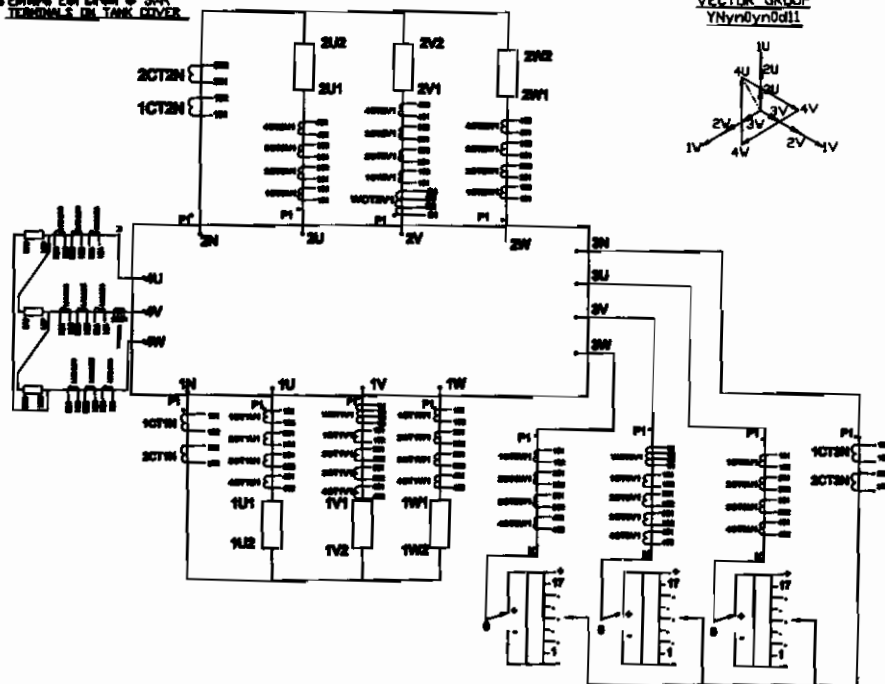
6 -HELES DIA 7 RI2



भारत हेवी इलेक्ट्रिकल्स लिमिटेड
BHARAT HEAVY ELECTRICALS LIMITED

MVA-RATING 315 CT DETAIL DRG. NO. 3 464 00 01028 ELECTRICAL SPEC.NO. 601292

● टर्मिनल टैंक काफ़ी है अथ
TERMINALS IN TANK COVER



VECTOR GROUP
YNyn0yn0d11

[illegible]

VENDOR CLASSIFIC.	NOMEN- CLATURE	NOMEN- CLATURE	UNIT QUANTITY		CURRENT TRANSFERRED				PURPOSE
			CLASSIFICATION	QUANTITY	DATE FROM FISCAL YEAR	DATE TO FISCAL YEAR	AMOUNT TRANSFERRED	AMOUNT TRANSFERRED	
W07001	W07001	W07001	PO	-	1000	30	12	SPV. PRCT.	
W07001	W07001	W07001	PO	-	1000	30	12	SPVCT.	
W07001	W07001	W07001	PO	30	-	-	-	SHARP PRCT.	
W07001	W07001	W07001	PO	-	1000	30	12	R.A.P.	
W07001	W07001	W07001	PO	30	-	-	-	SHARP PRCT.	
W07001	W07001	W07001	PO	-	1000	30	12	R.A.P.	
W07001	W07001	W07001	PO	-	1000	30	12	SPV. PRCT.	
W07001	W07001	W07001	PO	-	1000	30	12	SPVCT.	
W07001	W07001	W07001	PO	30	-	-	-	SHARP PRCT.	
W07001	W07001	W07001	PO	-	1000	30	12	R.A.P.	
W07001	W07001	W07001	PO	-	1000	30	12	SPV. PRCT.	
W07001	W07001	W07001	PO	-	1000	30	12	SPVCT.	
W07001	W07001	W07001	PO	30	-	-	-	SHARP PRCT.	
W07001	W07001	W07001	PO	-	1000	30	12	R.A.P.	
W07001	W07001	W07001	PO	-	1000	30	12	SPV. PRCT.	
W07001	W07001	W07001	PO	-	1000	30	12	SPVCT.	
W07001	W07001	W07001	PO	30	-	-	-	SHARP PRCT.	
W07001	W07001	W07001	PO	-	1000	30	12	R.A.P.	
W07001	W07001	W07001	PO	-	1000	30	12	SPV. PRCT.	
W07001	W07001	W07001	PO	-	1000	30	12	SPVCT.	
W07001	W07001	W07001	PO	30	-	-	-	SHARP PRCT.	
W07001	W07001	W07001	PO	-	1000	30	12	R.A.P.	
W07001	W07001	W07001	PO	-	1000	30	12	SPV. PRCT.	
W07001	W07001	W07001	PO	-	1000	30	12	SPVCT.	
W07001	W07001	W07001	PO	30	-	-	-	SHARP PRCT.	
W07001	W07001	W07001	PO	-	1000	30	12	R.A.P.	
W07001	W07001	W07001	PO	-	1000	30	12	SPV. PRCT.	
W07001	W07001	W07001	PO	-	1000	30	12	SPVCT.	
W07001	W07001	W07001	PO	30	-	-	-	SHARP PRCT.	
W07001	W07001	W07001	PO	-	1000	30	12	R.A.P.	
W07001	W07001	W07001	PO	-	1000	30	12	SPV. PRCT.	
W07001	W07001	W07001	PO	-	1000	30	12	SPVCT.	
W07001	W07001	W07001	PO	30	-	-	-	SHARP PRCT.	
W07001	W07001	W07001	PO	-	1000	30	12	R.A.P.	
W07001	W07001	W07001	PO	-	1000	30	12	SPV. PRCT.	
W07001	W07001	W07001	PO	-	1000	30	12	SPVCT.	
W07001	W07001	W07001	PO	30	-	-	-	SHARP PRCT.	
W07001	W07001	W07001	PO	-	1000	30	12	R.A.P.	
W07001	W07001	W07001	PO	-	1000	30	12	SPV. PRCT.	
W07001	W07001	W07001	PO	-	1000	30	12	SPVCT.	
W07001	W07001	W07001	PO	30	-	-	-	SHARP PRCT.	
W07001	W07001	W07001	PO	-	1000	30	12	R.A.P.	
W07001	W07001	W07001	PO	-	1000	30	12	SPV. PRCT.	
W07001	W07001	W07001	PO	-	1000	30	12	SPVCT.	
W07001	W07001	W07001	PO	30	-	-	-	SHARP PRCT.	
W07001	W07001	W07001	PO	-	1000	30	12	R.A.P.	
W07001	W07001	W07001	PO	-	1000	30	12	SPV. PRCT.	
W07001	W07001	W07001	PO	-	1000	30	12	SPVCT.	
W07001	W07001	W07001	PO	30	-	-	-	SHARP PRCT.	
W07001	W07001	W07001	PO	-	1000	30	12	R.A.P.	
W07001	W07001	W07001	PO	-	1000	30	12	SPV. PRCT.	
W07001	W07001	W07001	PO	-	1000	30	12	SPVCT.	
W07001	W07001	W07001	PO	30	-	-	-	SHARP PRCT.	
W07001	W07001	W07001	PO	-	1000	30	12	R.A.P.	
W07001	W07001	W07001	PO	-	1000	30	12	SPV. PRCT.	
W07001	W07001	W07001	PO	-	1000	30	12	SPVCT.	
W07001	W07001	W07001	PO	30	-	-	-	SHARP PRCT.	
W07001	W07001	W07001	PO	-	1000	30	12	R.A.P.	
W07001	W07001	W07001	PO	-	1000	30	12	SPV. PRCT.	
W07001	W07001	W07001	PO	-	1000	30	12	SPVCT.	
W07001	W07001	W07001	PO	30	-	-	-	SHARP PRCT.	
W07001	W07001	W07001	PO	-	1000	30	12	R.A.P.	
W07001	W07001	W07001	PO	-	1000	30	12	SPV. PRCT.	
W07001	W07001	W07001	PO	-	1000	30	12	SPVCT.	
W07001	W07001	W07001	PO	30	-	-	-	SHARP PRCT.	
W07001	W07001	W07001	PO	-	1000	30	12	R.A.P.	
W07001	W07001	W07001	PO	-	1000	30	12	SPV. PRCT.	
W07001	W07001	W07001	PO	-	1000	30	12	SPVCT.	
W07001	W07001	W07001	PO	30	-	-	-	SHARP PRCT.	
W07001	W07001	W07001	PO	-	1000	30	12	R.A.P.	
W07001	W07001	W07001	PO	-	1000	30	12	SPV. PRCT.	
W07001	W07001	W07001	PO	-	1000	30	12	SPVCT.	
W07001	W07001	W07001	PO	30	-	-	-	SHARP PRCT.	
W07001	W07001	W07001	PO	-	1000	30	12	R.A.P.	
W07001	W07001	W07001	PO	-	1000	30	12	SPV. PRCT.	
W07001	W07001	W07001	PO	-	1000	30	12	SPVCT.	
W07001	W07001	W07001	PO	30	-	-	-	SHARP PRCT.	
W07001	W07001	W07001	PO	-	1000	30	12	R.A.P.	
W07001	W07001	W07001	PO	-	1000	30	12	SPV. PRCT.	
W07001	W07001	W07001	PO	-	1000	30	12	SPVCT.	
W07001	W07001	W07001	PO	30	-	-	-	SHARP PRCT.	
W07001	W07001	W07001	PO	-	1000	30	12	R.A.P.	
W07001	W07001	W07001	PO	-	1000	30	12	SPV. PRCT.	
W07001	W07001	W07001	PO	-	1000	30	12	SPVCT.	
W07001	W07001	W07001	PO	30	-	-	-	SHARP PRCT.	
W07001	W07001	W07001	PO	-	1000	30	12	R.A.P.	
W07001	W07001	W07001	PO	-	1000	30	12	SPV. PRCT.	
W07001	W07001	W07001	PO	-	1000	30	12	SPVCT.	
W07001	W07001	W07001	PO	30	-	-	-	SHARP PRCT.	
W07001	W07001	W07001	PO	-	1000	30	12	R.A.P.	
W07001	W07001	W07001	PO	-	1000	30	12	SPV. PRCT.	
W07001	W07001	W07001	PO	-	1000	30	12	SPVCT.	
W07001	W07001	W07001	PO	30	-	-	-	SHARP PRCT.	
W07001	W07001	W07001	PO	-	1000	30	12	R.A.P.	
W07001	W07001	W07001	PO	-	1000	30	12	SPV. PRCT.	
W07001	W07001	W07001	PO	-	1000	30	12	SPVCT.	
W07001	W07001	W07001	PO	30	-	-	-	SHARP PRCT.	
W07001	W07001	W07001	PO	-	1000	30	12	R.A.P.	
W07001	W07001	W07001	PO	-	1000	30	12	SPV. PRCT.	
W07001	W07001	W07001	PO	-	1000	30	12	SPVCT.	
W07001	W07001	W07001	PO	30	-	-	-	SHARP PRCT.	
W07001	W07001	W07001	PO	-	1000	30	12	R.A.P.	
W07001	W07001	W07001	PO	-	1000	30	12	SPV. PRCT.	
W07001	W07001	W07001	PO	-	1000	30	12	SPVCT.	
W07001	W07001	W07001	PO	30	-	-	-	SHARP PRCT.	
W07001	W07001	W07001	PO	-	1000	30	12	R.A.P.	
W07001	W07001	W07001	PO	-	1000	30	12	SPV. PRCT.	
W07001	W07001	W07001	PO	-	1000	30	12	SPVCT.	
W07001	W07001	W07001	PO	30	-	-	-	SHARP PRCT.	
W07001	W07001	W07001	PO	-	1000	30	12	R.A.P.	
W07001	W07001	W07001	PO	-	1000	30	12	SPV. PRCT.	
W07001	W07001	W07001	PO	-	1000	30	12	SPVCT.	
W07001	W07001	W07001	PO	30	-	-	-	SHARP PRCT.	
W07001	W07001	W07001	PO	-	1000	30	12	R.A.P.	
W07001	W07001	W07001	PO	-	1000	30	12	SPV. PRCT.	
W07001	W07001	W07001	PO	-	1000	30	12	SPVCT.	
W07001	W07001	W07001	PO	30	-	-	-	SHARP PRCT.	
W07001	W07001	W07001	PO	-	1000	30	12	R.A.P.	
W07001	W07001	W07001	PO	-	1000	30	12	SPV. PRCT.	
W07001	W07001	W07001	PO	-	1000	30	12	SPVCT.	
W07001	W07001	W07001	PO	30	-	-	-	SHARP PRCT.	
W07001	W07001	W07001	PO	-	1000	30	12	R.A.P.	
W07001	W07001	W07001	PO	-	1000	30	12	SPV. PRCT.	
W07001	W07001	W07001	PO	-	1000	30	12	SPVCT.	
W07001	W07001	W07001	PO	30	-	-	-	SHARP PRCT.	
W07001	W07001	W07001	PO	-	1000	30	12	R.A.P.	
W07001	W07001	W07001	PO	-	1000	30	12	SPV. PRCT.	
W07001	W07001	W07001	PO	-	1000	30	12	SPVCT.	
W07001	W07001	W07001	PO	30	-	-	-	SHARP PRCT.	
W07001	W07001	W07001	PO	-	1000	30	12	R.A.P.	
W07001	W07001	W07001	PO	-	1000	30	12	SPV. PRCT.	
W07001	W07001	W07001	PO	-	1000	30	12	SPVCT.	
W07001	W07001	W07001	PO	30	-	-	-	SHARP PRCT.	
W07001	W07001	W07001	PO	-	1000	30	12	R.A.P.	
W07001	W07001	W07001	PO	-	1000	30	12	SPV. PRCT.	
W07001	W07001	W07001	PO	-	1000	30	12	SPVCT.	
W07001	W07001	W07001	PO	30	-	-	-	SHARP PRCT.	
W07001	W07001	W07001	PO	-	1000	30	12	R.A.P.	
W07001	W07001	W07001	PO	-	1000	30	12	SPV. PRCT.	
W07001	W07001	W07001	PO	-	1000	30	12	SPVCT.	
W07001	W07001	W07001	PO	30	-	-	-	SHARP PRCT.	
W07001	W07001	W07001	PO	-	1000	30	12	R.A.P.	
W07001	W07001	W07001	PO	-	1000	30	12	SPV. PRCT.	
W07001	W07001	W07001	PO	-	1000	30	12	SPVCT.	
W07001	W07001	W07001	PO	30	-	-	-	SHARP PRCT.	
W07001	W07001	W07001	PO	-	1000	30	12	R.A.P.	
W07001	W07001	W07001	PO	-	1000	30	12	SPV. PRCT.	
W07001	W07001	W07001	PO	-	1000	30	12	SPVCT.	
W07001	W07001	W07001	PO	30	-	-	-	SHARP PRCT.	
W07001	W07001	W07001	PO	-	1000	30	12	R.A.P.	
W07001	W07001	W07001	PO	-	1000	30	12	SPV. PRCT.	
W07001	W07001	W07001	PO	-	1000	30	12	SPVCT.	
W07001	W07001	W07001	PO	30	-	-	-	SHARP PRCT.	
W07001	W07001	W07001	PO	-	1000	30	12	R.A.P.	
W07001	W07001	W07001	PO	-	1000	30	12		

भारत मे निर्मित

MADE IN INDIA

NOTES:-

1. CUSTOMER IS REQUESTED TO QUOTE MAKER'S SL. NO., ELEC. - SPEC. NO., RATING & DIAGRAM PLATE DRG. NO., WHILE REFERRING ANY PROBLEM TO BHEL FOR EASY IDENTIFICATION.
2. INSTRUCTION FOR R & D PLATE REFER DRG. 3 499 00 00062.

[illegible]

6 -HOLES IN

NO

1. C
S
A

2. 1

[illegible]


MVA-RAM
 ● **दोषपूर्ण है**
TERMINAL


TERMINAL	WIRING	WIRING
1	100V	100V
2	100V	100V
3	100V	100V
4	100V	100V
5	100V	100V
6	100V	100V
7	100V	100V
8	100V	100V
9	100V	100V
10	100V	100V
11	100V	100V
12	100V	100V
13	100V	100V
14	100V	100V
15	100V	100V
16	100V	100V
17	100V	100V
18	100V	100V
19	100V	100V
20	100V	100V
21	100V	100V
22	100V	100V
23	100V	100V
24	100V	100V
25	100V	100V
26	100V	100V
27	100V	100V
28	100V	100V
29	100V	100V
30	100V	100V
31	100V	100V
32	100V	100V
33	100V	100V
34	100V	100V
35	100V	100V
36	100V	100V
37	100V	100V
38	100V	100V
39	100V	100V
40	100V	100V
41	100V	100V
42	100V	100V
43	100V	100V
44	100V	100V
45	100V	100V
46	100V	100V
47	100V	100V
48	100V	100V
49	100V	100V
50	100V	100V
51	100V	100V
52	100V	100V
53	100V	100V
54	100V	100V
55	100V	100V
56	100V	100V
57	100V	100V
58	100V	100V
59	100V	100V
60	100V	100V
61	100V	100V
62	100V	100V
63	100V	100V
64	100V	100V
65	100V	100V
66	100V	100V
67	100V	100V
68	100V	100V
69	100V	100V
70	100V	100V
71	100V	100V
72	100V	100V
73	100V	100V
74	100V	100V
75	100V	100V
76	100V	100V
77	100V	100V
78	100V	100V
79	100V	100V
80	100V	100V
81	100V	100V
82	100V	100V
83	100V	100V
84	100V	100V
85	100V	100V
86	100V	100V
87	100V	100V
88	100V	100V
89	100V	100V
90	100V	100V
91	100V	100V
92	100V	100V
93	100V	100V
94	100V	100V
95	100V	100V
96	100V	100V
97	100V	100V
98	100V	100V
99	100V	100V
100	100V	100V

2
 1

वर्ग	
आवृत्ति	गति
1	10
2	10
3	10
4	10
5	10
6	10
7	10
8	10
9	10
10	10

मे नि

REQUEST
 TING &
 TO BH
 FOR R

भारत
BHARA

DETAIL I

P1

600V101

600V102

600V103

600V104

600V105

600V106

600V107

1U1

1U2

POINT NO. (P.O.)	REMARKS (REMARKS)
	20
	20
	-
	20
	-
	20
	20
	-
	20
	-
	20

TO QUOT
AM PLAY
EASY
LATE R

2U2
 2U1
 2U3
 2U4
 2U5
 2U6
 2U7
 2U8
 2U9
 2U10
 2U11
 2U12
 2U13
 2U14
 2U15
 2U16
 2U17
 2U18
 2U19
 2U20
 2U21
 2U22
 2U23
 2U24
 2U25
 2U26
 2U27
 2U28
 2U29
 2U30
 2U31
 2U32
 2U33
 2U34
 2U35
 2U36
 2U37
 2U38
 2U39
 2U40
 2U41
 2U42
 2U43
 2U44
 2U45
 2U46
 2U47
 2U48
 2U49
 2U50
 2U51
 2U52
 2U53
 2U54
 2U55
 2U56
 2U57
 2U58
 2U59
 2U60
 2U61
 2U62
 2U63
 2U64
 2U65
 2U66
 2U67
 2U68
 2U69
 2U70
 2U71
 2U72
 2U73
 2U74
 2U75
 2U76
 2U77
 2U78
 2U79
 2U80
 2U81
 2U82
 2U83
 2U84
 2U85
 2U86
 2U87
 2U88
 2U89
 2U90
 2U91
 2U92
 2U93
 2U94
 2U95
 2U96
 2U97
 2U98
 2U99
 2U100
 2U101
 2U102
 2U103
 2U104
 2U105
 2U106
 2U107
 2U108
 2U109
 2U110
 2U111
 2U112
 2U113
 2U114
 2U115
 2U116
 2U117
 2U118
 2U119
 2U120
 2U121
 2U122
 2U123
 2U124
 2U125
 2U126
 2U127
 2U128
 2U129
 2U130
 2U131
 2U132
 2U133
 2U134
 2U135
 2U136
 2U137
 2U138
 2U139
 2U140
 2U141
 2U142
 2U143
 2U144
 2U145
 2U146
 2U147
 2U148
 2U149
 2U150
 2U151
 2U152
 2U153
 2U154
 2U155
 2U156
 2U157
 2U158
 2U159
 2U160
 2U161
 2U162
 2U163
 2U164
 2U165
 2U166
 2U167
 2U168
 2U169
 2U170
 2U171
 2U172
 2U173
 2U174
 2U175
 2U176
 2U177
 2U178
 2U179
 2U180
 2U181
 2U182
 2U183
 2U184
 2U185
 2U186
 2U187
 2U188
 2U189
 2U190
 2U191
 2U192
 2U193
 2U194
 2U195
 2U196
 2U197
 2U198
 2U199
 2U200
 2U201
 2U202
 2U203
 2U204
 2U205
 2U206
 2U207
 2U208
 2U209
 2U210
 2U211
 2U212
 2U213
 2U214
 2U215
 2U216
 2U217
 2U218
 2U219
 2U220
 2U221
 2U222
 2U223
 2U224
 2U225
 2U226
 2U227
 2U228
 2U229
 2U230
 2U231
 2U232
 2U233
 2U234
 2U235
 2U236
 2U237
 2U238
 2U239
 2U240
 2U241
 2U242
 2U243
 2U244
 2U245
 2U246
 2U247
 2U248
 2U249
 2U250
 2U251
 2U252
 2U253
 2U254
 2U255
 2U256
 2U257
 2U258
 2U259
 2U260
 2U261
 2U262
 2U263
 2U264
 2U265
 2U266
 2U267
 2U268
 2U269
 2U270
 2U271
 2U272
 2U273
 2U274
 2U275
 2U276
 2U277
 2U278
 2U279
 2U280
 2U281
 2U282
 2U283
 2U284
 2U285
 2U286
 2U287
 2U288
 2U289
 2U290
 2U291
 2U292
 2U293
 2U294
 2U295
 2U296
 2U297
 2U298
 2U299
 2U300
 2U301
 2U302
 2U303
 2U304
 2U305
 2U306
 2U307
 2U308
 2U309
 2U310
 2U311
 2U312
 2U313
 2U314
 2U315
 2U316
 2U317
 2U318
 2U319
 2U320
 2U321
 2U322
 2U323
 2U324
 2U325
 2U326
 2U327
 2U328
 2U329
 2U330
 2U331
 2U332
 2U333
 2U334
 2U335
 2U336
 2U337
 2U338
 2U339
 2U340
 2U341
 2U342
 2U343
 2U344
 2U345
 2U346
 2U347
 2U348
 2U349
 2U350
 2U351
 2U352
 2U353
 2U354
 2U355
 2U356
 2U357
 2U358
 2U359
 2U360
 2U361
 2U362
 2U363
 2U364
 2U365
 2U366
 2U367
 2U368
 2U369
 2U370
 2U371
 2U372
 2U373
 2U374
 2U375
 2U376
 2U377
 2U378
 2U379
 2U380
 2U381
 2U382
 2U383
 2U384
 2U385
 2U386
 2U387
 2U388
 2U389
 2U390
 2U391
 2U392
 2U393
 2U394
 2U395
 2U396
 2U397
 2U398
 2U399
 2U400
 2U401
 2U402
 2U403
 2U404
 2U405
 2U406
 2U407
 2U408
 2U409
 2U410
 2U411
 2U412
 2U413
 2U414
 2U415
 2U416
 2U417
 2U418
 2U419
 2U420

[illegible]

The schematic diagram illustrates the test setup for measuring the output resistance \$R_o\$. A DC power supply provides input to a circuit containing a load resistor \$R_L\$. The output voltage \$V_o\$ is measured across \$R_L\$. A switch mechanism allows the load resistor to be disconnected from the power supply and connected to ground, facilitating the measurement of open-circuit voltage and short-circuit current.

ELEC.

REFER

0 00061

स लि
ALS
TRICAL
IV
PI-
117
-1

परिमाण	संख्या	कुल
10	-	10
20	-	20
30	-	30
40	-	40
50	-	50
60	-	60
70	-	70
80	-	80
90	-	90
100	-	100
110	-	110
120	-	120
130	-	130
140	-	140
150	-	150
160	-	160
170	-	170
180	-	180
190	-	190
200	-	200
210	-	210
220	-	220
230	-	230
240	-	240
250	-	250
260	-	260
270	-	270
280	-	280
290	-	290
300	-	300
310	-	310
320	-	320
330	-	330
340	-	340
350	-	350
360	-	360
370	-	370
380	-	380
390	-	390
400	-	400
410	-	410
420	-	420
430	-	430
440	-	440
450	-	450
460	-	460
470	-	470
480	-	480
490	-	490
500	-	500
510	-	510
520	-	520
530	-	530
540	-	540
550	-	550
560	-	560
570	-	570
580	-	580
590	-	590
600	-	600
610	-	610
620	-	620
630	-	630
640	-	640
650	-	650
660	-	660
670	-	670
680	-	680
690	-	690
700	-	700
710	-	710
720	-	720
730	-	730
740	-	740
750	-	750
760	-	760
770	-	770
780	-	780
790	-	790
800	-	800
810	-	810
820	-	820
830	-	830
840	-	840
850	-	850
860	-	860
870	-	870
880	-	880
890	-	890
900	-	900
910	-	910
920	-	920
930	-	930
940	-	940
950	-	950
960	-	960
970	-	970
980	-	980
990	-	990
1000	-	1000

MA
RING
2.

[illegible]

BY
DATE

BY
DATE

BY
DATE

BY
DATE

BY
DATE

BY
DATE

BY
DATE

BY
DATE

FILE PROJECTION	
0010009976	CM 2001
2	
3	
4	
5	
6	
7	
8	
9	
(ALL DIMENSIONS ARE IN INCHES)	
10	

HEAVY HEAVY ELECTRICALS LTD.

THE INFORMATION ON THE DRAWING IS THE PROPERTY OF HEAVY HEAVY ELECTRICALS LTD. IT IS NOT TO BE USED IN ANY MANNER OR FOR ANY PURPOSE WITHOUT THE WRITTEN PERMISSION OF HEAVY HEAVY ELECTRICALS LTD.

3 459 00 00000

3 459 00 00000

3 459 00 00000

3 459 00 00000

3 459 00 00000

3 459 00 00000

3 459 00 00000

3 459 00 00000

3 459 00 00000

3 459 00 00000

3 459 00 00000

3 459 00 00000

3 459 00 00000

3 459 00 00000

3 459 00 00000

3 459 00 00000

3 459 00 00000

3 459 00 00000

3 459 00 00000

3 459 00 00000

3 459 00 00000

3 459 00 00000

3 459 00 00000

3 459 00 00000

3 459 00 00000

3 459 00 00000

3 459 00 00000

3 459 00 00000

3 459 00 00000

3 459 00 00000

3 459 00 00000

3 459 00 00000

3 459 00 00000

3 459 00 00000

3 459 00 00000

3 459 00 00000

3 459 00 00000

3 459 00 00000

3 459 00 00000

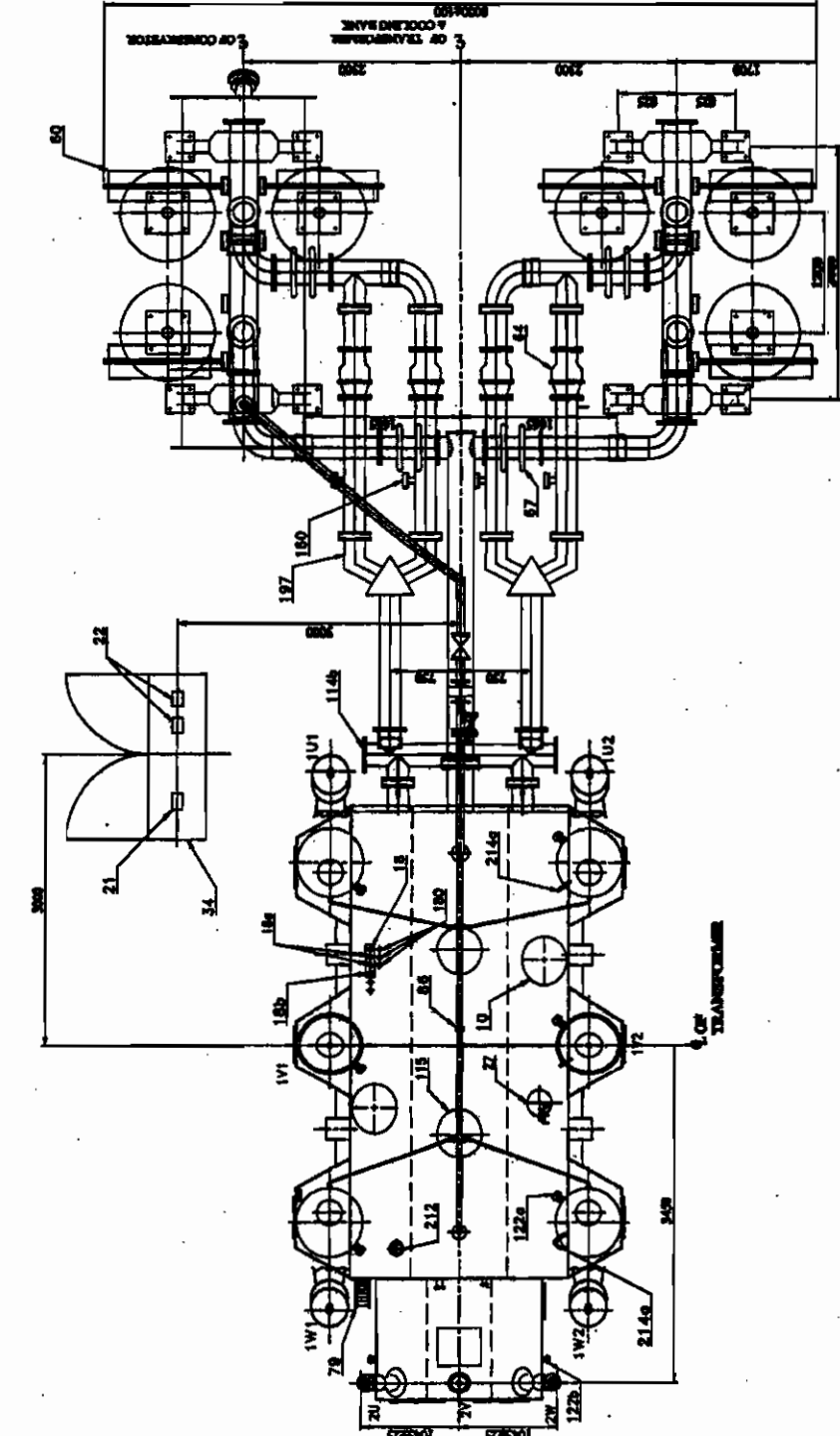
3 459 00 00000

3 459 00 00000

3 459 00 00000

3 459 00 00000

3 459 00 00000



REV	DATE	BY	CHKD	APPD	DESCRIPTION
1	1977	107			
2	1977	107			
3	1977	107			
4	1977	107			
5	1977	107			
6	1977	107			
7	1977	107			
8	1977	107			
9	1977	107			
10	1977	107			
11	1977	107			
12	1977	107			
13	1977	107			
14	1977	107			
15	1977	107			
16	1977	107			
17	1977	107			
18	1977	107			
19	1977	107			
20	1977	107			
21	1977	107			
22	1977	107			
23	1977	107			
24	1977	107			
25	1977	107			
26	1977	107			
27	1977	107			
28	1977	107			
29	1977	107			
30	1977	107			
31	1977	107			
32	1977	107			
33	1977	107			
34	1977	107			
35	1977	107			
36	1977	107			
37	1977	107			
38	1977	107			
39	1977	107			
40	1977	107			
41	1977	107			
42	1977	107			
43	1977	107			
44	1977	107			
45	1977	107			
46	1977	107			
47	1977	107			
48	1977	107			
49	1977	107			
50	1977	107			
51	1977	107			
52	1977	107			
53	1977	107			
54	1977	107			
55	1977	107			
56	1977	107			
57	1977	107			
58	1977	107			
59	1977	107			
60	1977	107			
61	1977	107			
62	1977	107			
63	1977	107			
64	1977	107			
65	1977	107			
66	1977	107			
67	1977	107			
68	1977	107			
69	1977	107			
70	1977	107			
71	1977	107			
72	1977	107			
73	1977	107			
74	1977	107			
75	1977	107			
76	1977	107			
77	1977	107			
78	1977	107			
79	1977	107			
80	1977	107			
81	1977	107			
82	1977	107			
83	1977	107			
84	1977	107			
85	1977	107			
86	1977	107			
87	1977	107			
88	1977	107			
89	1977	107			
90	1977	107			
91	1977	107			
92	1977	107			
93	1977	107			
94	1977	107			
95	1977	107			
96	1977	107			
97	1977	107			
98	1977	107			
99	1977	107			
100	1977	107			

3 459 00 00000

3 459 00 00000

3 459 00 00000

3 459 00 00000

3 459 00 00000

3 459 00 00000

3 459 00 00000

3 459 00 00000

3 459 00 00000

3 459 00 00000

3 459 00 00000

3 459 00 00000

3 459 00 00000

3 459 00 00000

3 459 00 00000

3 459 00 00000

3 459 00 00000

3 459 00 00000

3 459 00 00000

3 459 00 00000

3 459 00 00000

3 459 00 00000

3 459 00 00000

3 459 00 00000

3 459 00 00000

3 459 00 00000

3 459 00 00000

3 459 00 00000

3 459 00 00000

3 459 00 00000

3 459 00 00000

3 459 00 00000

3 459 00 00000

3 459 00 00000

3 459 00 00000

3 459 00 00000

3 459 00 00000

3 459 00 00000

3 459 00 00000

3 459 00 00000

3 459 00 00000

3 459 00 00000

3 459 00 00000

3 459 00 00000

3 459 00 00000

3 459 00 00000

3 459 00 00000

3 459 00 00000

3 459 00 00000

3 459 00 00000

3 459 00 00000

3 459 00 00000

3 459 00 00000

3 459 00 00000

3 459 00 00000

3 459 00 00000

3 459 00 00000

3 459 00 00000

3 459 00 00000

3 459 00 00000

3 459 00 00000

3 459 00 00000

3 459 00 00000

3 459 00 00000

3 459 00 00000

3 459 00 00000

3 459 00 00000

3 459 00 00000

3 459 00 00000

3 459 00 00000

3 459 00 00000

3 459 00 00000

3 459 00 00000

3 459 00 00000

3 459 00 00000

3 459 00 00000

3 459 00 00000

3 459 00 00000

3 459 00 00000

3 459 00 00000

3 459 00 00000

3 459 00 00000

3 459 00 00000

3 459 00 00000

3 459 00 00000

3 459 00 00000

3 459 00 00000

3 459 00 00000

3 459 00 00000

3 459 00 00000

3 459 00 00000

3 459 00 00000

3 459 00 00000

3 459 00 00000

3 459 00 00000

3 459 00 00000

3 459 00 00000

3 459 00 00000

3 459 00 00000



NOTES :-

[illegible]

STAY ON TOP OF THE NEWS
WITH THE NEW YORK TIMES MAGAZINE

[illegible]

